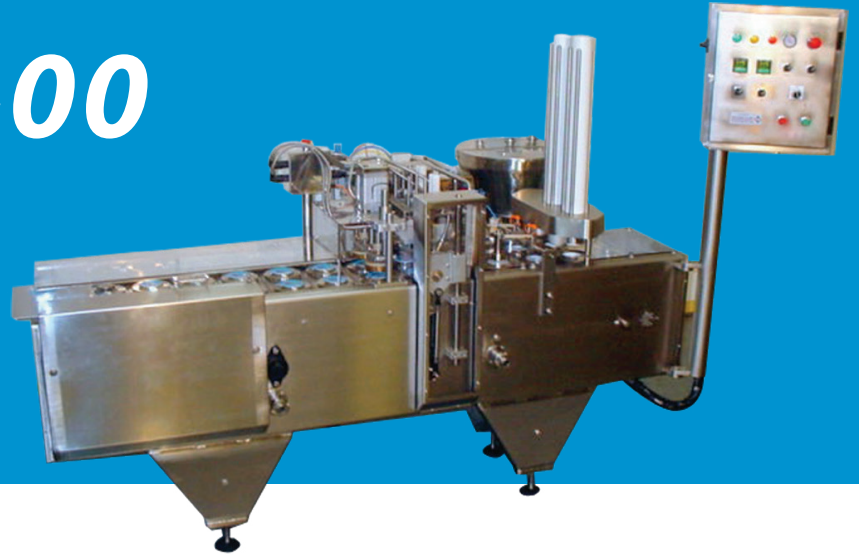


# SERIES 2400

## FILL/SEAL/LID MACHINES

ACCURACY IN DISPENSING



**Fully-automatic (in-line) filling and lidding system for liquids, pastes, creams and other viscous products.**

The **SERIES 2400** is designed to handle a wide range of stackable round/rectangular tubs. Available in single, dual or four lane configurations for filling, sealing and lidding tubs. The system is capable of up to 50 cycles per minute, enabling outputs of up to 200 containers per minute on four track machines depending on product type and container size.

## FEATURES

- ⊖ Up to 200 tubs/min filling and lidding.
- ⊖ Up to 120 tubs/min filling and heat seal membranes.
- ⊖ Microprocessor (PLC) control of all functions ensures exceptional reliability.
- ⊖ Standard no container/no fill and no container/no lid or foil feature.
- ⊖ Safety guarding and interlocks to the appropriate standards.
- ⊖ Ejection of tub to optional out-feed conveyor and collating table.

FILLED WITH EXPERIENCE

## VERSATILE & ACCURATE

Precise container positioning is monitored by a robust mechanical indexing system driven by an electronically controlled motor with overload protection. Speed is infinitely variable within the range of the system. Systems for liquid or semi-liquid products generally incorporate a pneumatically operated volumetric (piston type) filler – with bottom-up fill if necessary..

## SIMPLE & SAFE TO USE

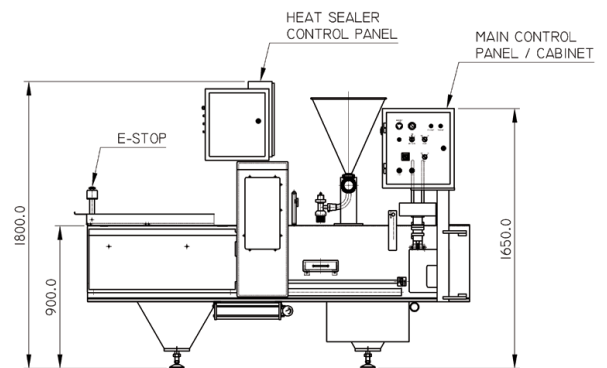
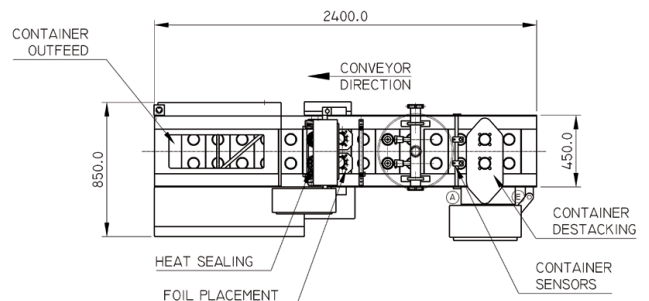
Container and lid handling functions are cam operated with some pneumatic assistance with a microprocessor (PLC) control of all functions to ensure exceptional reliability. Numerous solid state sensing devices, provides many interlocks and safeguards including the standard no container/ no fill and no container/no lid features on all machines.

## HYGIENIC

The lidding system is manufactured to strict hygiene standards and can be easily disassembled when in-place cleaning is not applicable. Construction is generally corrosion resistant, with frame and covers fabricated in T304 stainless steel. All contact parts are manufactured from T316 stainless steel or suitable plastics, allowing it to be used for such diversified products as foodstuffs and corrosive chemicals

## ACCESSORIES

- System often incorporates multiple head Hunter volumetric fillers (Series 500).
- Optional bottom-up fill, container lift at two filling stations can be provided.
- Change parts available for different sized containers and lids.



- Ⓐ COMPRESSED AIR CONNECTION
- Ⓔ 230V AC ELECTRICAL CONNECTION

Currently filled by **SERIES 2400**: Butter, cheese, cosmetics, alcohol, condiments, essential oils, medicines, toiletries, lip balms, sauces, toppings and flavouring, paints, adhesives, waxes.



[www.hunterfillers.com](http://www.hunterfillers.com)

 **hunter**  
FILLING SYSTEMS